



PRESERVE PRECIOUS MEMORIES WITH THE LEADER IN PHOTO PRINTING.

Designed for high-quality print production, the Epson SureLab SL-D3000 is a 6-colour, compact digital dry lab. It utilises Epson's proven Micro Piezo™ print head technology, in conjunction with Epson's original ink at a maximum resolution of 1440 x 1440 dpi. Print photos, cards, invitations, flyers and promotional leaflets in volume on dedicated glossy, lustre and matte paper.



Up to
12" Wide



Epson
Genuine Inks



Environment
Friendly



SL-D3000 Single Roll + Sorter



SL-D3000 Dual Roll + Sorter

ENGINEERED FOR BUSINESS

Highly Efficient and Eco-Friendly

Individual high-capacity ink cartridges and automated paper loading save you time, money and reduce wastage.

Renowned Quality and Durability

Epson Micro Piezo™ print head delivers the highest photo print quality with extreme durability and energy efficiency.

Complete Business Solution

Epson offers a full range of photo media, inks, software and hardware features to meet your specific needs.

Welcome to the printing revolution. SureLab gives you the flexibility to produce a wide variety of printed materials ranging from 4 to 12 inches in width. Achieve stunning results every time with wide colour gamut Epson UltraChrome D6 ink, formulated to deliver vivid and lifelike colours with excellent black density.



Budget and Environmentally Friendly

Chemical liquids and their disposal costs are eliminated through the use of environmentally friendly, high capacity and competitively priced ink cartridges that allow you to do more with your budget and for the environment. In addition, the print engine is built with durable components to support large volume commercial photo use while minimising the need for periodic part replacement.



700ml ink cartridges in 6 colours:
Cyan, Magenta, Yellow, Black, Light Cyan, Light Magenta

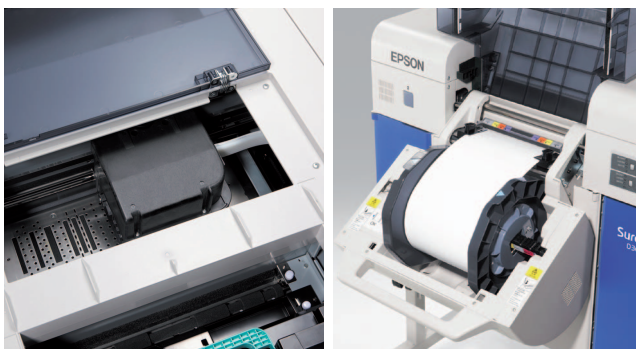
Lifelike Prints

Epson's UltraChrome D6 6-colour photo ink-set achieves a wide colour gamut that exceeds that of silver halide, yielding long lasting prints that are vivid and lifelike with excellent black density. Besides regular glossy paper, prints can also be made on matte paper, opening up options to print cards and other collaterals.



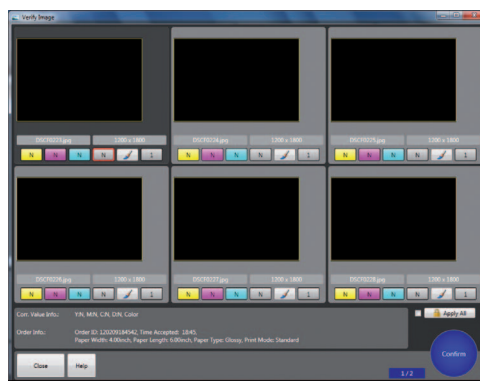
Unrivalled Efficiency

High-speed printing is achieved through the clockwork coordination between the high performance Micro Piezo™ print heads; employing multiple nozzles and cutting edge Variable Size Droplet Technology (VSDT), and software-controlled rollers to ensure that papers are precisely fed.



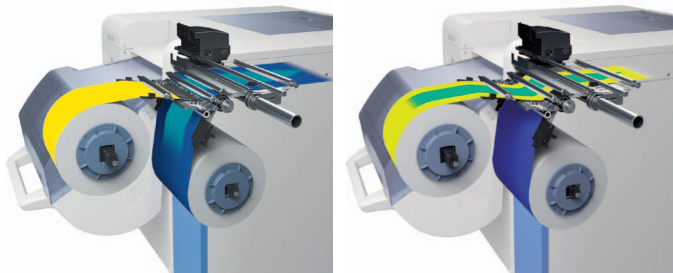
Intelligent Software

The bundled system software guides you through a maintenance process that requires no special training to use. The newly developed SureLab OrderController is an optional proprietary software with basic photo re-touching functions that can help you easily process high volumes of photos.



Smart Automation

Use the Auto Select function available only for the Dual Roll Model to automatically select the front or rear roll based on the width and type of paper set in. An optional sorter unit automatically sorts up to 10 jobs, offering you reliability and peace of mind to tend to other matters.



The dual roll model has an auto select function that automatically selects front or rear roll based on paper width and paper type.

Broad Applications

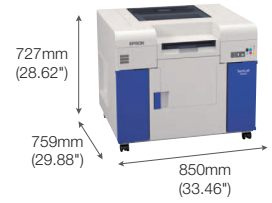
Print media such as panoramic photos, 12" width and other large prints are supported on this model. This capability can be extended to include large format and fine art prints.



MODEL NUMBER	SL-D3000	
Printing	Epson Micro Piezo™ on-demand inkjet with Variable Sized Droplet Technology	
Print Method	736 nozzles x 6 colours	
Nozzle Configuration	1.5pl	
Minimum Droplet Size	720 x 720 dpi (Glossy / Luster / Matte Paper), 1440 x 1440 dpi (Glossy / Luster Paper)	
Maximum Resolution	650 sheets / hour (152 x 102mm / 6" x 4", at 720 x 720 dpi)	
Maximum Print Speed	Dot matrix, 9 pin: 40 characters x 2 lines	
Back Print Unit	Character size: 7 x 9 dot / 1 character: 1.2 x 3.1mm	
Paper Width	102mm (4"), 127mm (5"), 152mm (6"), 203mm (8"), 210mm (A4), 254mm (10"), 305mm (12")	
Print Size	3.5" x 5" - 12" x 48"	
Supported Media	Epson genuine media: Glossy, Luster, Matte	
Ink System	Epson UltraChrome D6 Ink	
Ink Type	Cyan, Magenta, Yellow, Black, Light Cyan, Light Magenta	
Ink Cartridges		
Media Handling	Single Roll Model	Dual Roll Model
	Rear roll up to 305mm / 12" media width	Rear roll up to 305mm / 12" media width Front roll up to 210mm / 8" media width Auto-Switch between front / rear rolls
Rear Roll Specifications		
Max. Roll Length	100m	100m
Core Diameter	76.2 ± 0.2mm (3")	76.2 ± 0.2mm (3")
External Diameter	Max. 265mm	Max. 264mm
Weight	< 8.5kg	< 7.5kg
Front Roll Specifications		
Max. Roll Length	N.A.	100m
Core Diameter	N.A.	76.2 ± 0.2mm (3")
External Diameter	N.A.	Max. 264mm
Weight	N.A.	< 7.5kg
		Front roll does not support Matte paper
Interface		
Standard	USB 2.0 Hi-Speed	USB 2.0 Hi-Speed
Electrical Specifications		
Rated Voltage	AC 100V to AC 240V	AC 100V to AC 240V
Frequency	50Hz to 60Hz	50Hz to 60Hz
Power Consumption		
Operating	Approx. 500W	Approx. 500W
Standby	Approx. 60W	Approx. 60W
Noise Level		
Sound Pressure Level	< 60 dB(A)	< 60 dB(A)
Consumables	Order Code	
Black Ink Cartridge	C13T710100	
Cyan Ink Cartridge	C13T710200	
Magenta Ink Cartridge	C13T710300	
Yellow Ink Cartridge	C13T710400	
Light Cyan Ink Cartridge	C13T710500	
Light Magenta Ink Cartridge	C13T710600	
Ribbon Cassette for Back Print Unit	C43S015635	
Professional Paper For SureLab (Glossy)	C13S042475 (4"x100m), C13S042476 (5"x100m), C13S042477 (6"x100m), C13S042478 (8"x100m), C13S042479 (10"x100m), C13S042480 (12"x100m), C13S042481 (A4x100m)	
Professional Paper For SureLab (Luster)	C13S042482 (4"x100m), C13S042483 (5"x100m), C13S042484 (6"x100m), C13S042485 (8"x100m), C13S042486 (10"x100m), C13S042487 (12"x100m), C13S042488 (A4x100m)	
Professional Paper For SureLab (Matte)	C13S042489 (4"x100m), C13S042490 (5"x100m), C13S042491 (6"x100m), C13S042492 (8"x100m), C13S042493 (10"x100m), C13S042494 (12"x100m), C13S042495 (A4x100m)	
Cleaning Sheet	C13S042497	

Dimensions & Weight

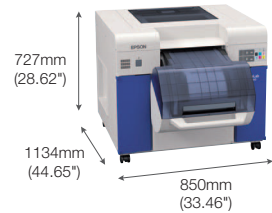
Single Roll
Weight: Approx. 119kg (262.35 lbs)



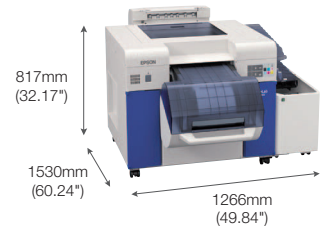
Single Roll with Sorter
Weight: Approx. 157kg (346.13 lbs)



Dual Roll
Weight: Approx. 127kg (279.99 lbs)



Dual Roll with Sorter
Weight: Approx. 165kg (363.76 lbs)



© 2017 Epson India Pvt. Ltd. All Rights Reserved. Reproduction in part or in whole, without the written permission from Epson, is strictly prohibited. EPSON and EXCEED YOUR VISION are registered trademarks of Seiko Epson Corporation. All other products names and other company names used herein are for identification purposes only and are the trademarks or registered trademarks of their respective owners. Epson disclaims any and all rights in those marks. Print samples shown are simulations only. Specifications and product availability are subject to change without notice and may vary between countries. Please check with local Epson offices for more information.

Information correct as at February 2017.

EPSON INDIA PVT. LTD.
12th Floor, The Millenia,
Tower A, No.1, Murphy Road,
Ulsoor, Bangalore - 560 008.
Tel: 080-30515000
Fax: 080-30515005

Regional Offices:

Ahmedabad - 3314 8500/01, Chennai - 3967 7500, Cochin - 4012 315,
Coimbatore - 98942 19200, Jaipur 96808 52132, Kolkata - 6500 9370/77,
Mumbai - 3079 8200, New Delhi - 3312 0300/01,
Pune - 3028 6000/05, Hyderabad - 6463 9640/41



Epson Helpline: For product info, service or to order a
Consumable - 1800 425 0011 (9AM - 6PM) (Mon - Sat)
For service - 1860 3000 1600 (9AM - 6PM) (Mon - Sat)

www.epson.co.in

